



Your Weather Experts

**PO Box 7100
Hackettstown, NJ 07840**

Frank Lombardo, President
Thomas M. Else, Chief Meteorologist
Kevin Hopler, Meteorologist

July 31, 2012

**Attn: John Doe| ABC Company
RE: 10 Year Snow Summaries - *SAMPLE***

As per your request, we have researched our Climatological data base and prepared the following table which contains monthly snowfall accumulations for the 2002-2003 to 2011-2012 winter seasons. The table also includes a detailed analysis on snowfall, including: monthly totals/averages and a breakdown of various winter events by category for the area. Also included are our new *Snowtistics* which gives a graphical analysis of numerous statistics derived from the 15 year snowfall and event data. Snowfall totals are in inches. Weather data used in our report was obtained from archived Weather Works CST© data as well as other National Oceanic and Atmospheric Administration, NOAA records. If you have any questions regarding this summary or need further data, please do not hesitate to call.

CERTIFICATION

I certify that the information in this report is true and accurate and that any estimations, interpolations or assumptions that have been made were done so with expert accuracy by a professional meteorologist. Additionally, I reserve the right to amend these conclusions made herein upon further discovery of additional meteorological data.

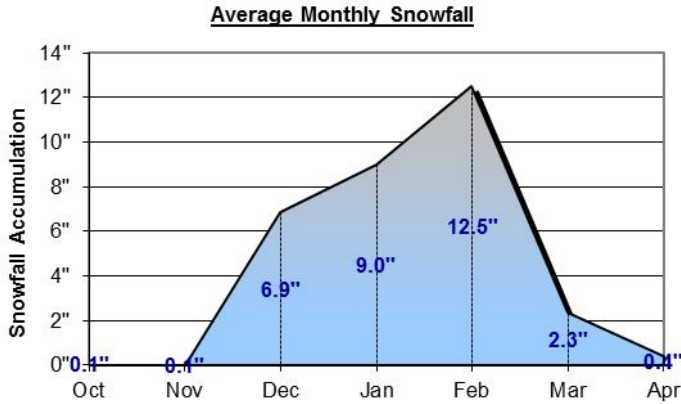
Sam DeAlba
Meteorologist – Weather Works

WINTER TOTALS

	02-03	03-04	04-05	05-06	06-07	07-08	08-09	09-10	10-11	11-12	10-yr Avg
SNOWFALL BY MONTH											
October	0.0	0.0	0.0	0.0	0.0	0.0	0.1	0.0	0.0	1.0	0.1
November	0.8	0.0	0.0	Trace	0.0	0.0	Trace	0.0	Trace	0.0	0.1
December	11.0	13.8	1.8	11.0	0.0	3.4	1.4	14.7	11.6	0.0	6.9
January	5.7	9.9	16.2	3.7	3.7	0.0	6.1	1.1	32.3	11.4	9.0
February	28.3	0.4	16.0	18.5	3.8	7.1	4.2	40.1	1.7	5.0	12.5
March	0.5	9.0	2.4	0.0	4.9	0.0	6.5	0.0	0.0	0.0	2.3
April	4.0	0.0	0.0	Trace	0.0	0.0	0.0	0.0	Trace	0.0	0.4
Total	50.3	33.1	36.4	33.2	12.4	10.5	18.3	55.9	45.6	17.4	31.3
									30 Year Average:		30.0
NUMBER OF EVENTS											
Dusting-0.9	6	5	8	5	11	11	10	5	10	3	7.4
1.0-1.9	4	4	2	1	2	3	3	3	3	2	2.7
2.0-3.9	1	2	2	3	3	0	1	1	2	3	1.8
4.0-7.9	1	4	2	1	0	1	2	0	1	1	1.3
8.0-11.9	2	0	0	0	0	0	0	1	1	0	0.4
≥12	1	0	1	1	0	0	0	3	1	0	0.7
Total	15	15	15	11	16	15	16	13	18	9	14.3

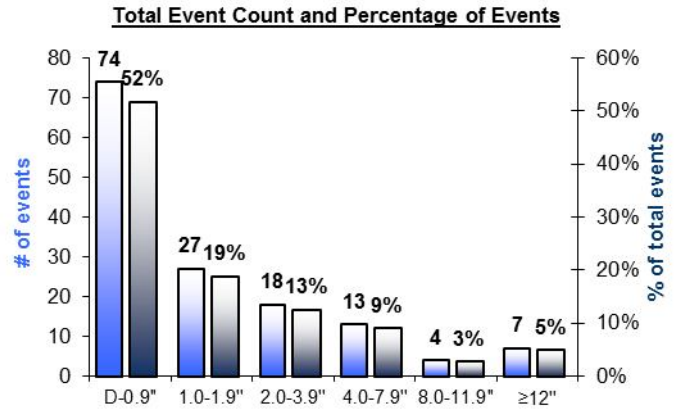
WeatherWorks Snowtistics for 2002-2012

10 Year Snowfall Statistics



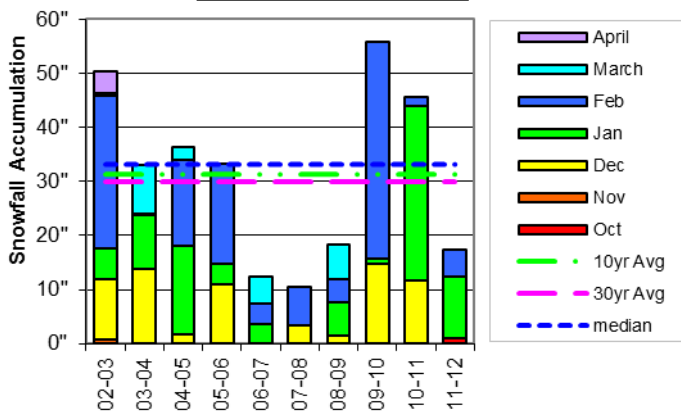
The **Average Monthly Snowfall** graph shows the average amount of snow which occurred in each month from October through April over the last 10 years.

10 Year Event Statistics



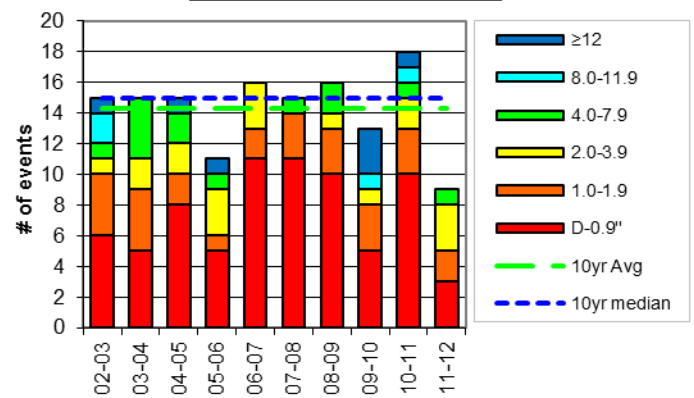
The **Total Event Count and Percentage of Events** graph shows the total number of events and percentage of events over the last 10 years which occurred in a specific accumulation range.

Monthly/Seasonal Snowfall



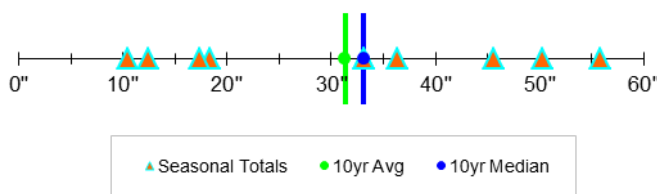
Each complete column in the **Monthly/Seasonal Snowfall** graph represents the total amount of snowfall in each of the last 10 seasons. Each color in a given column represents a month's snowfall for that respective season.

Monthly/Seasonal Event Count



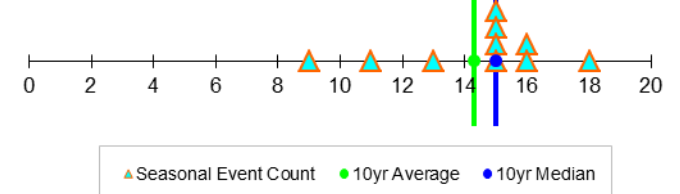
Each complete column in the **Monthly/Seasonal Event Count** graph represents the total number of events in each of the last 10 seasons. Each color in a given column represents a month's snowfall for that respective season.

Comparison of Seasonal Snowfall Totals



The **Comparison of Seasonal Snowfall Totals** plot shows all of the last 10 year's seasonal snowfall totals organized only by accumulation.

Comparison of Seasonal Event Counts



The **Comparison of Seasonal Event Counts** plot shows all of the last 10 year's event counts organized only by number of events. Any points above the line represent duplicate seasonal event counts.