



Volume 4, Issue 4

May 2010

**In This Issue**

- May Prospectus
- SIMA Symposium
- April Summary
- Online Weather
- WeatherWorks Publications

**May's Weather Prospectus**



So far, this Spring has been very warm. In fact, in many places it has been the warmest Spring ever. Despite the warm April and start of May, there will be the potential for a few brief colder periods during the middle of the month following the passage of a few storm systems. This could even mean some lows back in the 30s for some typically cooler places over the next 1-3 weeks.

The good news is that this relatively cool and changeable weather pattern should end towards the end of the month bringing the potential for an extended period of favorable conditions for outdoor projects, especially in the last week of May.

**SIMA Symposium**



Snow & Ice Professionals: SIMA's annual Symposium is back this June with a tremendous amount of exhibits, presentations and workshops on the industry. This year's symposium will be held in Providence, RI at the Rhode Island Convention Center from

**April '10 starts as Summer, ends as Spring**



Apr 9: Peach trees in full bloom 2-3 weeks early in Southern NJ (Phila. Inquirer)

For a change, the biggest weather story during a month in 2010 was a pleasant one that nearly everyone enjoyed. The first eight days of the month resembled a Summer-like pattern with very warm high pressure centered over the Northeast and Mid-Atlantic. At times, a "Bermuda High", brought in some very warm temperatures on a Southwest wind. This remarkable pattern led to each day in the 70s and 80s (except immediate coastal spots) with mostly sunny skies. During the height of the warmth, there were some places that even hit 90 degrees. The "heat" was uniform just about everywhere as there were places as far North as Hartford and Boston that broke the 90 degree mark. In fact, on one of the days (April 7), Bridgeport, CT broke their previous record high by a mind-boggling eight degrees. Of course, all of the warmth led to vegetation growing well before normal. Though, the early Spring arrival is pretty to look at, it also became an issue as susceptible plants were more prone to killing frosts and freezes. Additionally, lawn-cutting season started much earlier for landscapers, along with an unusually nasty allergy season.



Light snow covers mulch in Durham, NH on the morning of 4-16 (WMUR Viewer Photos)

Following the summer-like start to the month, the weather turned back to what we are normally accustomed to in April. Temperatures were near normal and though there were a couple precipitation makers, nothing significant developed. April 16th featured some chilly air with scattered showers in

Northern New England and there were a lot of towns in Southern NH and Northeast MA that saw some snow mix with rain.

June 23-26. You can register [here](#) at SIMA's website.

The trade show that accompanies the Symposium features products, programs and services for the snow & ice industry. The show is open from 1-5 PM on June 24th and again 9 AM - 1 PM on the 25th. Make sure to stop by booth #529 as WeatherWorks will be there. Frank, Tommy, Kevin, Sean and John Kruk are going to be at the booth so come on over to say hello!

### April 2010 Max Temp

|               |    |
|---------------|----|
| Hagerstown    | 94 |
| DC - Dulles   | 93 |
| New York      | 92 |
| Providence    | 92 |
| Hartford      | 90 |
| Baltimore     | 90 |
| Philadelphia  | 89 |
| Trenton       | 89 |
| Worcester, MA | 86 |

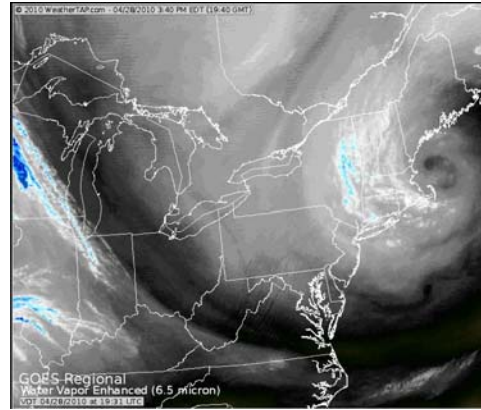
### Website of the Month



[www.mygolfweather.com](http://www.mygolfweather.com)

Mygolfweather is a forecast service provided by the forecasters at WeatherWorks to the golf industry in Eastern PA, NJ and Southern NY. Mygolfweather aims to "take the chance" out of the forecast to maximize a golfer's time on the course. Not only do highly specific forecasts keep golfers away from weather threats on the course, it helps course owners avoid unfortunate and preventable cancellations due to weather. Be sure to check

The only notable storm of the month came towards the end as a long duration series of low pressure systems produced rain or passing showers for parts of April 25-28. Eventually, a strong, closed upper-level low formed in Northern New England (see image to the right) and this was able to keep prolonged precipitation in across that area. It also pulled down a lot of cold Canadian air and a lot of the mountains and high elevations of New York, Vermont & N. Hampshire saw a significant spring snowstorm. This cold air mass would also set up a scattered frost and freeze across much of the Northeast and Mid-Atlantic, potentially affecting several of the early developing vegetation.



(Click image to view animation)  
4-28-10: Afternoon Water Vapor Satellite

### Shortcomings of Online Weather

On a February night, you are wondering what the temperature is in your town, Clinton, NJ, as it affects whether you need to do some work overnight. Luckily, you can just get on the internet, head to weather.com and find the weather for your town. It says that Clinton is currently 37 degrees and there is a 10% chance of precipitation tonight. Perfect, you got the information that you were looking for...or did you?

Let's take a closer look at how this information is obtained. First, the current temperature. If you inspect closely, there is no source of where that temperature is coming from. There is no airport that takes data in Clinton and additionally no other known sources of data. So where is this temperature from? Some weather services have created very sophisticated software to calculate parameters like temperature, dewpoint, wind, etc. Although this could be useful, do not be fooled as in many cases the weather data is an ESTIMATION based on mathematical algorithms. Understand that the information you are looking at may be computer-generated instead of recorded by an instrument.

Now what about that 10% chance of precipitation. There was never any mention of precipitation from the forecast service that you subscribe to. Additionally, no evening TV meteorologist has precipitation in their forecast. The reason for this discrepancy is because the majority of websites that create forecasts for thousands of locations are computer-derived. In this example, computer models may indicate a 6% probability of precipitation (snow). This is rounded up to a 10% chance of precipitation by the web-based services. On the other hand, any forecaster who looks and analyzes the data to make a forecast, knows there is no chance of any precipitation. Those computer issued forecasts are also how a free AccuWeather forecast can say the high will be 43 degrees with 0.14 inches of precipitation a full 14 days out. A specific numerical forecast beyond seven days would likely have less than a 25% success rate as meteorological data in no way could support issuing an ACCURATE forecast with that amount of specificity. Keep in mind, that if computer models were consistently better at creating forecasts than humans were, there would be no need for

Mygolfweather before your next round!

**Quick Links**

[WeatherWorks](#)  
[Your WeatherWorks Page](#)

forecast meteorologists. Even with the vast improvement of model data, that has not happened yet and is not close to being reality.

Interpolated computer data and forecasts are now available in many different places online. Despite the remarkable amount of information that is provided, users should have a firm understanding of exactly what they are looking at and how the output is created.

**WeatherWorks Spring Publications**



May has become an exciting time of year for special publications sent from WeatherWorks. While the Winter Forecast

might get the most attention, significant efforts are put into Spring publications like the Winter Summary and Hurricane Forecast. Right now, work is well underway on both of these important products. The first batch of Winter Summaries were e-mailed to [Storm Alert Service](#) clients last week. In the coming week or two, clients who have yet to receive the Winter Summary applicable to their region will see the publication arrive by e-mail.

Meanwhile, WeatherWorks' Long Range expert Anthony Masiello is preparing the 2010 Atlantic Hurricane Forecast. Right now, Anthony is pouring over copious amounts of data ranging from Sea Surface Temperatures of the world's oceans to warming in the Stratosphere to forecast this season's tropical activity. While the forecast is not yet complete, early indications from Anthony suggest above normal tropical activity this summer. Be sure to read the full forecast, which will be e-mailed to all [Storm Alert Service](#) clients in mid to late May.

**May Averages (30 Years: 1971 - 2000)**

|           | Trenton, NJ (KTTN) |         | Washington, DC (KDCA) |         |
|-----------|--------------------|---------|-----------------------|---------|
|           | May 1              | May 31  | May 1                 | May 31  |
| High Temp | 67                 | 76      | 71                    | 80      |
| Low Temp  | 44                 | 54      | 51                    | 61      |
| Precip    | 3.60"              |         | 3.82"                 |         |
| Snowfall  | 0.0"               |         | 0.0"                  |         |
| Sunrise   | 5:59 AM            | 5:32 AM | 6:10 AM               | 5:45 AM |
| Sunset    | 7:54 PM            | 8:22 PM | 8:01 PM               | 8:27 PM |

[Forward email](#)

✉ [SafeUnsubscribe®](#)

This email was sent to kenelliott@weatherworksinc.com by [seanrowland@weatherworksinc.com](mailto:seanrowland@weatherworksinc.com).

[Update Profile/Email Address](#) | Instant removal with [SafeUnsubscribe™](#) | [Privacy Policy](#).

Email Marketing by



WeatherWorks | PO Box 7100 | Hackettstown | NJ | 07840