



WeatherWorks



THE WEATHER TRACKER

<http://www.weatherworksinc.com>

PO BOX 7100
HACKETTSTOWN, NJ 07840
(908) 850-8600

Edited by:
Sean Rowland and
Ken Elliott

Volume 2, Issue 1 |

November 2008

Inside this issue...

Late October Surprise	1
WeatherWorks Forecast Forms	1
Winter Mosaic Radars	2
Client Contact Sheets	2
November Averages	2

October Days over 70 Degrees



Washington, DC	14
Philadelphia, PA	11
Baltimore, MD	11
Hartford, CT	9
Trenton, NJ	9
Newark, NJ	9
Allentown, PA	8
Islip, NY	7
NYC, NY (Cen. Park)	7
Boston, MA	5
Mount Pocono, PA	3
Worcester, MA	1

A Mild and Calm October ends Stormy...and Snowy



Long Valley, NJ on 10-28-08 (from NJ.com)

For the majority of October it was a beautiful Autumn month. Outdoor workers enjoyed pleasant temperatures and dry weather especially in the middle half of the month. There was a stretch from October 9-16 where most of the East Coast saw High Temperatures in the 70s. Also, a lot of weather disturbances were reserved to the West, keeping a nice ridge over the East and many dry days.

This all changed right around the last weekend in the month. A pattern shift began and it started with a coastal storm on the 25th.

Rain was heavy at times and winds were quite gusty, but flooding and damage was nearly non-existent. This storm was followed by an extremely deep and strong upper trough, thus setting up a monster of a storm.

There were signs several days prior to a coastal storm developing, but it was not until the day before the storm that it appeared likely a strong low would form. There was cold air coming in behind the low and it was believed that some higher elevations could change to snow. What was not anticipated was the intense precipitation and the deeper cold air would be able to change heavy rain to heavy wet snow. For most, this "Nor'easter" was a rain and wind maker. But for NW NJ, Central NJ and East-

ern PA there were periods of wet snow. Hardest hit were the higher elevations of NW NJ and the Poconos, where the precip was hardest and snow fell heaviest, over a foot in spots. Because there were still leaves on the trees, the extra weight led to many trees and branches coming down.

The banded precipitation switched rain to snow in SE PA and Central NJ, where it rapidly accumulated on ALL SURFACES! Reports of over an inch came from both North of Philadelphia and near the New Brunswick, NJ areas as plows had to come out to take care of all the slush and snow. After a few stormy October days, look for quieter days thru the first half of November

Top Snowfall Totals: 10-28-08

Tobyhanna, PA	16.0"
Mount Olive, NJ	8-12"
Richboro, PA	3.6"
New Brunswick, NJ	1.5"

Updated WeatherWorks Forecast and Snow Alert Forms

With the start of November, the snow season begins rapidly and [WeatherWorks](#) has made some updates to the forecast forms. The most noticeable addition is the "Potential Hazards" section. This part of the forecast form is intended to help highlight what hazards will affect you and your snow-removal operations. To the right is an example of the hazards and ones that apply to the event are marked with an X. If there are any suggested hazards that you do not see on the list and would like to potentially see added

in the future, please send your suggestions to [Sean Rowland](#).

There are a few more subtle additions made to the forms, however, the design is very

similar to last year. We also added a new form that combines the features of a snow alert and the daily forecast with the goal of providing as much information as possible.

POTENTIAL HAZARDS:

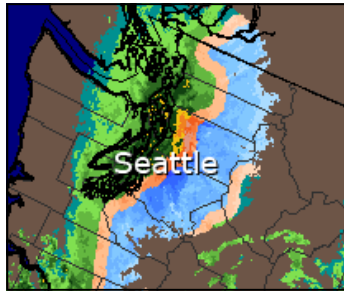
Rapid snow accum (1"+ / hr)	X	Night/AM widespread refreeze	
Significant blowing / drifting		Night/AM patchy refreeze	
Very low visibility at times		Heavy accum. during rush hour	
Long storm duration (+12 hrs)		Quick untreated pavement accum	
Down trees/limbs/power lines	X	Temps during event below 20°	
Patchy ice accumulation		Long duration (+24h) below 32°	
Severe widespread ice accum		Rapid temperature drop	
Heavy sleet accumulation		Flooding possible	

An example of "Potential Hazards", a new feature in WeatherWorks Snow Forecasts and Alerts.

Winter Mosaic Radars - Users Beware!

Winter Mosaic Radars are everywhere it seems these days. Most television stations and weather oriented websites use them in some form because not only are they aesthetically pleasing, they are easy to understand.

The only problem is that these mosaics use formulas and algorithms to make an "educated guess" of what type of precipitation is falling. In many cases, the formulas work out well. However, there are times when this is not the case. Sometimes the mosaics will show rain where it is snowing and vice versa. Furthermore, to be on the safe side, mosaics have a tendency to over estimate an area of mixed pre-



WeatherTap Winter Mosaic Radar on 11-4-08 at 5:30 AM

cipitation. The usual salmon color of mixed precip will extending into an all snow area, or solidly into an area where rain is falling. In the mosaic above, it suggests mixed precip in the Seattle suburbs, where at the time, temperatures were in the low 40's with a plain cold

rain falling through the area.

Another problem with certain winter mosaics is that they rely partially on computer model data to capture the vertical temperature profiles. If the models are not handling a situation well, or the model used has a low resolution, this will lead to errors in Winter Mosaic Radar products.

Winter Mosaic Radars are a useful tool for those looking to determine precipitation-type, however it is important to use caution when evaluating radar, especially with mixed precip.

Client Contact Sheets

As evidenced by the snow some areas experienced to close out October, the winter season is upon us. [WeatherWorks](#) greatly appreciates all those that have sent their contact sheets in over the past several weeks.

In the process of alerting our clients to the October snow, our meteorologists did run into more than a handful of returned e-mails, disconnected cell phone numbers and other assorted

issues. The majority of these problems were the result of outdated contact information.

It turns out that in areas that needed to be alerted, nearly 30% of clients had not yet submitted a contact sheet. So if your organization has not sent information to us THIS YEAR, please do so as soon as possible. This way when the time comes, we can get in touch with you as quickly as possible.

As a reminder, we have streamlined the client contact process this season on the web. Just visit the [Contact Sheet Page](#) and fill it out as completely as possible. If you have any problems or concerns with the process, please call or send an e-mail to [Ken Elliott](#).



NOVEMBER AVERAGES (30 year averages: 1971-2000)						
	Boston, MA (BOS)		Newark, NJ (EWR)		Baltimore, MD (BWI)	
	Nov. 1	Nov. 30	Nov. 1	Nov. 30	Nov. 1	Nov. 30
High Temp	56	47	59	48	61	51
Low Temp	42	33	44	35	38	31
Precip (Mo. Total)	3.98"		3.88"		3.12"	
Snowfall (Mo. Total)	1.5"		0.6"		0.6"	
Sunrise	7:18 AM	6:53 AM	7:27 AM	7:00 AM	7:35 AM	7:07 AM
Sunset	5:37 PM	4:13 PM	5:53 PM	4:30 PM	6:05 PM	4:44 PM

November 2008 Temperature Outlook

There will likely be a lot of fluctuation this month with troughs and ridges going back and forth between West and East. We should start warm, but there is going to be many ups and downs this month.

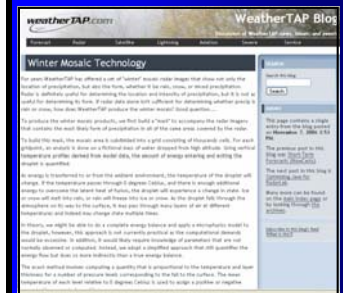
November 2008 Precipitation Outlook

Precipitation should average to near normal levels. A couple of wet systems are likely during this period, including the potential for a few coastal storms.

From November 18 - 21 the NJ League of Municipalities will be holding its 93rd annual conference in Atlantic City. The meeting is one of the biggest in the country as it involves hundreds of town and county municipalities. Panels, workshops and exhibits are just a few of the features available.

WeatherWorks will be at the conference, so be sure to stop by Booth #2419 and say hello.

WEBSITE OF THE MONTH



In 2006, WeatherTap wrote an in-depth blog posting about Winter Mosaic Radars. The post contains a wealth of information about how the WeatherTap Winter Mosaic is created. Be advised, there is a fair amount of scientific content in the post!

UPCOMING EVENTS

- Nov 18-21 NJ League of Municipalities Conference Atlantic City, NJ
- Nov. 27 Thanksgiving Day